

ARCTIC MONOBLOCK



ARCTIC MONOBLOCK "ALL IN ONE" SOLUTION

The Arctic Monoblock is an 'all in one' cooling system designed for cold rooms up to 20 m³. It represents an ideal solution for commercial use in various types of facilities.

The Arctic Monoblock uses the refrigerant R290, achieving an **environmentally friendly solution** and ensuring **energy efficiency**.

The units are designed with a focus on **compactness** and **simplicity**. The compact design allows for easy installation, application, maintenance, and servicing.

INFORMATIONS

FEATURES	EQUIPMENT
compact design	hermetic compressor
"all in one" solution for coldrooms up to 20 m ³	electrical cabinet with electronic controller
coldroom wall thickness up to 150 mm	housing with anticorrosive protection
simple installation	air cooled condenser
light and cooling switch	dynamic evaporator
hot gas defrost	solenoid valve for hot gas defrost
CE ("declaration of conformity")	capillary tube/TXV
R290 natural refrigerant (except some models)	filter drier
	protective pressure switch HP/LP
	condensate pipe heater
	condensate collector with overflow pipe
PREINSTALLED CABLING	
for coldroom light	
for door switch	
for door hinge heater (LT models)	

MODELS

MT			LT		
OPERA CODE	TYPE	REFRIGERANT	OPERA CODE	TYPE	REFRIGERANT
64001	SCR012	R290	64189	SCK150	R290
64187	SCR058	R290	64191	SCL150	R452A
64188	SCR034	R290	64190	ACK210	R290
64000	ACR100	R290	64192	ACL220	R452A
			64193	ACL300	R452A

TECHNICAL DATA

MT MODELS

	Technical Specifications	Unit	SCR012	SCR058	SCR034	arc100
Unit	Power supply	(Volt/ph/Hz)	230/1/50			230/1/50
	Power input	(W)	730	920	1160	1410
	Compressor	(m ³ /h)	2.11	2.49	3.03	3.89
	Comp. type		hermetic			
	Refrigerant		R290			
	Defrost	(el./hot gas)	hot gas			
	Defrost draw	(W)	/			
Condenser	Fans	(nx ^o)	1x254			2x254
	Airflow	(m ³ /h)	1050			2100
Evaporator	Fans	(nx ^o)	1x200			2x200
	Airflow	(m ³ /h)	550			1100
	Air throw	(m)	5			5

SELECTION OF ARCTIC MONOBLOCK

		Unit	SCR012	SCR058	SCR034	arc100
Tamb 20°C	Thl 5°C	W	1065	1295	1495	2400
		m ³	11	15	17	26.1
	Thl 0°C	W	860	1100	1270	2026
		m ³	8.4	11.5	14	19.71
	Thl -5°C	W	725	855	1060	1715
		m ³	6	7.5	9.4	14.7
Tamb 32°C	Thl 5°C	W	970	1070	1265	1953
		m ³	9	11	13.2	19.6
	Thl 0°C	W	785	855	980	1629
		m ³	6.5	7.5	9.6	14.9
	Thl -5°C	W	660	755	845	1381
		m ³	4.8	5.8	7.2	11
Tamb 43°C	Thl 5°C	W	710	880	1040	1660
		m ³	5.8	7	8.8	14.5
	Thl 0°C	W	625	690	835	1357
		m ³	3.6	4.2	5.2	10.1
	Thl -5°C	W	495	545	670	1173
		m ³	3	3.4	4.3	7.9

*selection table for 100 mm wall thickness, for 80 mm wall thickness use 0,8 coefficient

LT MODELS

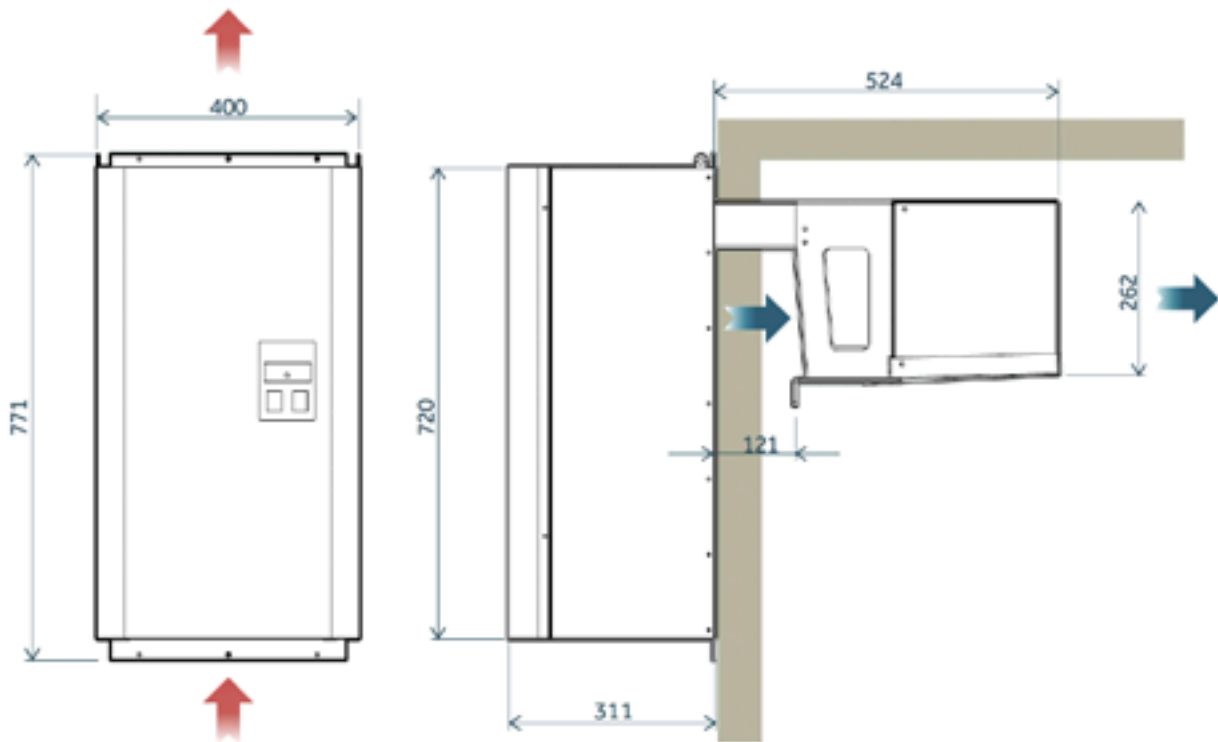
	Technical Specifications	Unit	SCK150	SCL150	ACK210	ACL220	ACL300
Unit	Power supply	(Volt/ph/Hz)	230/1/50		230/1/50	400/3/50	
	Power input	(W)	1350		1460	1810	2400
	Compressor	(m ³ /h)	4.84		5.99	9.29	12.96
	Comp. type		hermetic				
	Refrigerant		R290	R452A	R290	R452A	
	Defrost	(el./hot gas)	hot gas				
	Defrost draw	(W)	/				
Condenser	Fans	(n×ø)	1x254		2x254	1x300	
	Airflow	(m ³ /h)	1050		2100	1610	
Evaporator	Fans	(n×ø)	1x200		2x200	1x300	
	Airflow	(m ³ /h)	550		1100	1700	
	Air throw	(m)	5		5	7.5	

SELECTION OF ARCTIC MONOBLOCK

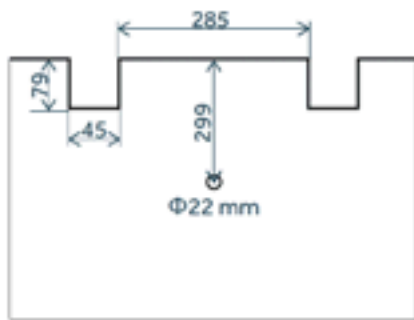
		Unit	SCK150	SCL150	ACK210	ACL220	ACL300
Tamb 20°C	Thl 5°C	W	950	1295	1210	2022	3110
		m ³	10.2	13	13.4	21.3	38.8
	Thl 0°C	W	820	1084	950	1720	2652
		m ³	8.2	10.9	9.4	16.9	30.8
	Thl -5°C	W	630	918	865	1511	2334
		m ³	4.8	8.3	8.5	14	24.8
Tamb 32°C	Thl 5°C	W	810	948	1020	1566	2535
		m ³	6.6	8.2	10	14.2	27.7
	Thl 0°C	W	620	780	810	1310	2125
		m ³	4.8	5.4	7	10.6	21.2
	Thl -5°C	W	560	630	590	1133	1887
		m ³	4	4.1	5.2	8.6	17
Tamb 43°C	Thl 5°C	W	640	710	710	1215	2037
		m ³	5	6.1	6.6	10.1	20.7
	Thl 0°C	W	495	538	570	994	1687
		m ³	3.8	3.9	4.4	7.5	15.5
	Thl -5°C	W	455	443	510	844	1455
		m ³	3	3	3.6	5.8	12.7

*selection table for 100 mm wall thickness, for 80 mm wall thickness use 0,8 coefficient

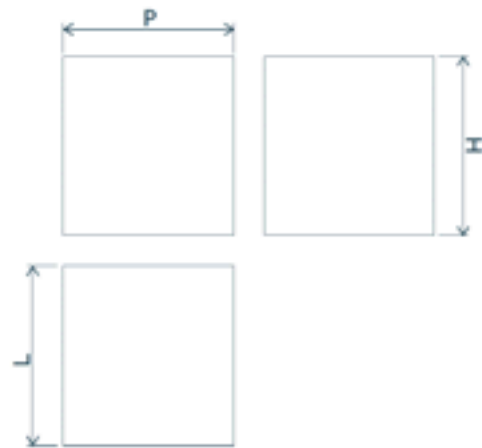
DIMENSIONS



MOUNTING

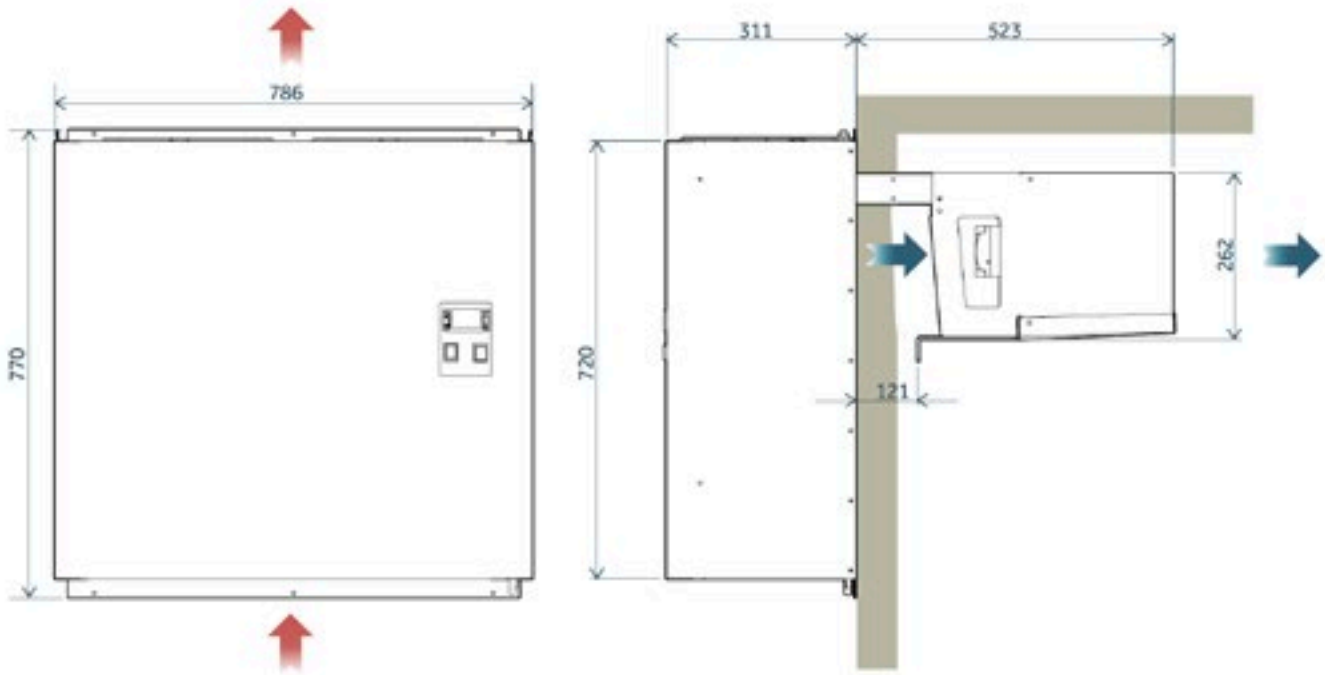


PACKAGING DIMENSIONS

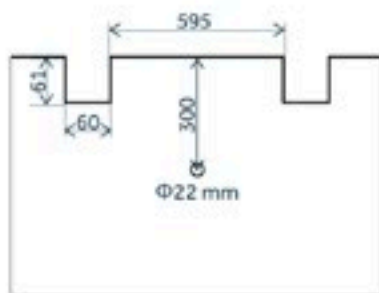


	SCR012	SCR058	SCR034	SCK150	SCL150
PxLxH (mm)	450x900x920				
Mass nett (kg)	44		48		52
Mass gross (kg)	53		57		61

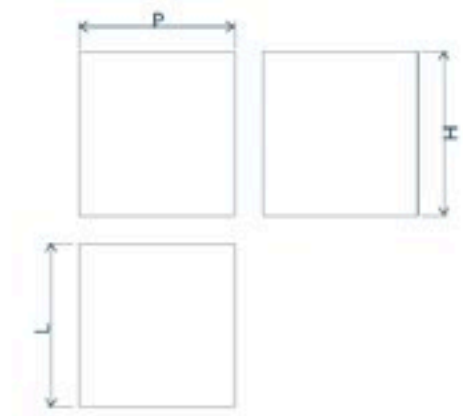
DIMENSIONS



MOUNTING

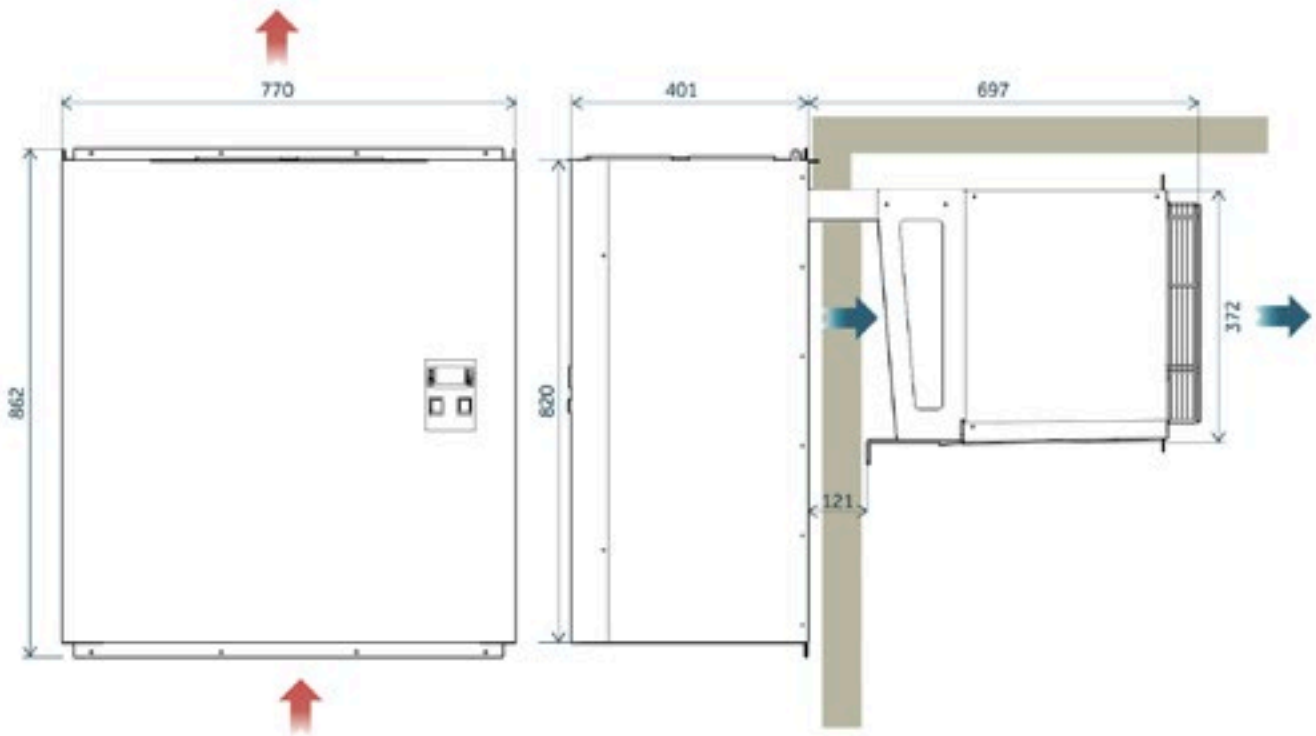


PACKAGING DIMENSIONS

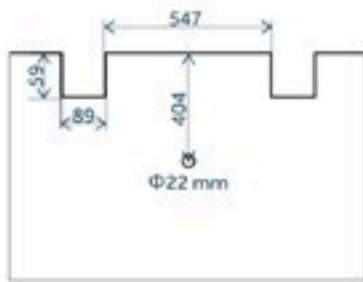


	ACR100	ACK210	ACL220
PxLxH (mm)	830x900x920		
Mass nett (kg)	73	73	83
Mass gross (kg)	85	85	95

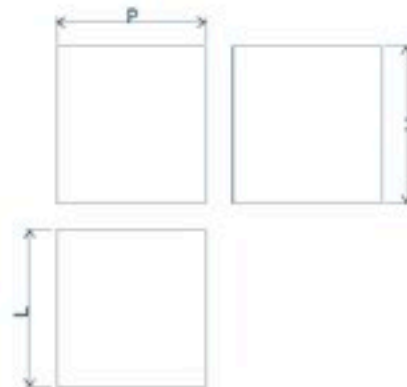
DIMENSIONS



MOUNTING



PACKAGING DIMENSIONS



	ACL300
PxLxH (mm)	840x1160x1030
Mass nett (kg)	93
Mass gross (kg)	129

